

Legacy's Tenacatita and Barra Info and Useful Waypoints

CAUTION: All the usual disclaimers apply. You are responsible for the safe navigation of your vessel. These waypoints and other information are offered to assist you, however you should always cross check them against other sources and using your own eyeballs, instrumentation, and good judgment.

Tenacatita Bay Waypoints (Map Datum WGS 84)

Roca Centro	19 17.402 N	104 49.692 W	Small rocky island in the approach to the inner anchorage of Tenacatita Bay
Sentinel Rock	19 17.474 N	104 50.106 W	Tall free standing rock on the western entrance to the inner anchorage
Charlie's Rock?	19 17.343 N	104 50.120 W	Charlie's Charts warns of a dangerous rock between Sentinel Rock and Roca Centro. Cruiser surveys over several years have failed to find it, however this dangerous submerged rock off Punta Chubasco is the best candidate. A boat coming from the Aquarium close in might hit this rock.
Libertad wreck	19 17.804 N	104 50.068 W	Reported position of the remains of the yacht Libertad which burned and sank at Tenacatita in 2002.
Cabeza de Navidad reef	19 12.795 N	104 49.420 W	Dangerous reef off the islands at the tip of Cabeza De Navidad (the point between Tenacatita and Barra)

General Info – Tenacatita, Barra & Melaque

VHF Net – 9:00 am each day on VHF Channel 22

VHF Channels – DO NOT use VHF 23, 18 or 17.

Geographic info – Tenacatita

Good Dog Beach: This is the small beach tucked into the western corner of the anchorage. The break is generally very mild. An easy place for Fido to get ashore. Trail to Playa Tenacatita straight back from beach.

Main Beach and palapa: The main beach is the sandy beach on the north side of the anchorage. The main dinghy landing is just to the right of the bluff on the beach. The palapa is on the far left end of the beach tucked into the grove of palm trees. The Blue Bay Hotel is on the far right end of the beach.

Jungle River Trip: The entrance to the jungle river is at the left end of the main beach between the reef and the palapa. Entrance to the river is easier at plus tides. It is also possible to enter the river over the reef at the base of the bluff at +1 foot tides. This route may avoid breaking seas in the river mouth and the worst of the shallows. Dodge the submerged rocks. At very low tides you may want to land the dinghy on the main beach and roll it along until you can relaunch in front of the palapa. The jungle river trip is about 2 ½ miles through the mangroves and dead-ends at the dinghy landing on the lagoon side of Playa Tenacatita. A 20-peso dinghy parking fee is sometimes collected. There are restaurants and a well stocked small tienda there. The small town of Revelcito is about 3 km up the road from Playa Tenacatita.

Trails: There are a number of trails near Tenacatita suitable for walkers, runners, or mountain riders.

From the center of Good Dog Beach a rough trail leads a couple of hundred yards into the bush where it meets a rough jeep road. To the left this road leads about 2 ½ miles over the hills to the east end of Playa Tenacatita. To the right this road reaches the river opposite the panga dock.

From behind the horse stables by the Blue Bay Hotel a jeep trail leads north, bears left around the mangroves, and eventually reaches Revelcito at about 4.5 miles. Go left to reach Playa Tenacatita. A long circuit can be made by combining these two trails.

Alternate Anchorages: In strong southerly weather boats may find protected anchorage off La Manzanilla or off the Tamarindo Resort beach.

Services – Tenacatita

Trash: Trash may be disposed in the barrels located about 150 feet to the left of the palapa on the main beach.

Palapa – “La Vena”: Has good food and beverages, and is open until about 5 pm – closed Tuesday.

Provisions: Provisions can be obtained in La Manzanilla or at the small tienda in Playa Tenacatita at the far end of the jungle river trip.

Laundry: Laundry can sometimes be arranged through the palapa.

Fuel: Jugs of fuel can sometimes be supplied by the palapa. At times, cruisers have obtained small quantities of fuel through the Fiesta Mexicana restaurant in Playa Tenacatita. Otherwise, there is a fuel dock in Barra.

Water and ice: It is sometimes possible to arrange purchase of water and/or ice through the palapa. Both are available at Playa Tenacatita and La Manzanilla.

Internet and Telephone: Available in La Manzanilla. Blue Bay Hotel (their computer) for US\$5 per half hour. Unsecured WiFi access points in the anchorage and off La Manzanilla with hi-gain antenna, sporadic. Tel-Mex (Cingular) cell phone service.

Blue Bay Hotel: This is an all-inclusive resort which discourages visitors. Day-passes are available at the front desk.

Navigation – La Manzanilla

Location: The community on the eastern side of Bahia Tenacatita (incorrectly labeled as Tenacatita in Rains).

Anchorage: Exposed to the NW; large swell and wind, especially in the afternoon. Anchor off the main part of town. The cove at the south end of town is shallow and foul. Holding appears to be good. Viable anchorage in strong SE winds.

Dinghy Landing: Troublesome surf landing dampens many. Many cruisers pack their clothes and groceries in dry bags and expect to get wet coming or going. The break is generally milder in the morning and builds rapidly after noon as the NW wind builds. Alternatively you can get a cab from the Blue Bay Hotel and return in three hours for about MX \$300 for four persons.

Services – La Manzanilla

Supplies: There are many small tiendas and depositos for supplies. Cruiser favorites include Abarrotes Lydia and Fruiteria Dalia.

Restaurants: Several good restaurants are available. Cruiser favorites include Palapa Joes (big screen TV for sports) and Martin's Restaurant for French inspired Mexican dishes (off the SW corner of the plaza).

Medical: The farmacia is run by Dr. Martha who can handle simple medical problems.

Book Exchange: A small book exchange supporting local youth programs is located a few doors south of the plaza on one of the side streets.

Cocodrillos: A large number of caimans can be seen from the viewing area at the north end of town or from the beachfront road.

Transportation: Bus service to Melaque starts at 8:30am and runs about every two hours until late afternoon / early evening. Taxi service also available.

Assistance: Larry and Nancy of Casa Alegre (yellow house on the beach in the middle of town) often monitor the morning net and can provide information concerning La Manzanilla.

Navigation – Barra de Navidad

Barra Entrance: The entrance to Barra de Navidad is very simple as there are red and green channel markers that begin outside the breakwater. Stay between the channel markers as far as the entrance to the Marina (to starboard).

Barra Fuel Dock: There are no channel markers beyond the marina. The fuel dock is past the marina to starboard in the lagoon. To go to the fuel dock you should run parallel to the breakwater and then make a turn and stay parallel to the wall leading to the fuel dock. There is a large shoal between the lagoon anchorage channel and the fuel dock that runs from near the island to near the marina breakwater. (See the chartlet on page 3.) Sometimes there are a couple of floats north of the fuel dock marking the cable crossing – no obstruction here.

Grand Bay Marina: The marina monitors channel 16, though they are not good about responding to radio calls. Calling someone already in the Marina and asking them to check with the office for a slip may be more reliable. Cruisers have had good luck just going in and taking an open slip on G dock and reporting to the office after-the-fact. In 2007, the marina rate was about US\$2/foot/night. Marina phone 314-337-9009 (press zero for English speaking hotel operator).

Lagoon Anchorage: To reach the anchorage area in the lagoon you must start in the channel running from the breakwater by the marina entrance to the island in the lagoon. The channel is approximately 12 feet deep at zero tide and is very uniform in depth. The sides of the channel are very steep, so any depths in the 9 foot range indicate imminent grounding. See the diagram, Legacy's waypoints, and the details of Kavenga's survey of the channel and limits of the anchorage on page 3.

Colimilla – Barra Lagoon: This is the small village on the eastern shore of the lagoon just past the fuel dock. As well as several good restaurants this is also the location of Maria's Tienda. The outboard service business on the beach does stainless welding.

Barra – Landing and Local Transport: Water taxis are available for local transportation. Call "Taxi Aquatico" on channel 23. Fare is about 20 pesos roundtrip between the marina and Barra, and 25 pesos roundtrip between the lagoon and Barra.

You can also take your dinghy to Barra. Land your dinghy at the Hotel Sands and tie it along the seawall. Leave your motor down to avoid damage to other dinghies, and consider a stern anchor to hold you off the wall.

From Barra, you can take a 4 peso bus or a 50 peso taxi to Melaque.

The Manzanillo Airport is accessible only by taxi (no bus). About 250 pesos from Barra or 500 pesos from the Grand Bay.

Services – Barra de Navidad

Trash: In Colimilla, a blue barrel labeled "Basura" on the street to Maria's; at the fuel dock; or in Barra in blue barrels on the street outside the Sands Hotel. Trash left at the Sands must be in large black trash bags. No small or light colored bags.

Water: Available at the fuel dock or contact Maria's Tienda for bottled water delivery.

Propane: Contact Maria's Tienda on channel 77.

Provisions: There are many small tiendas and pescaderias in Barra. The veggie trucks in Barra offer very nice produce. Look for them along Vera Cruz.

Melaque has more and larger stores. Especially notable is Super Hawaii which specializes in gringo foods.

Maria's Tienda in the village of Colimilla has most items that cruisers want, and she will also do special orders. Contact Maria on channel 77. To find her tienda, dock your dinghy on the beach near Restaurant Colimilla, walk up the street one block, and turn right. Maria's Tienda is a half block on the right near Fortino's Restaurant. Ask Maria for directions to her uncle's pescaderia also in Colimilla.

French Baker: Delivers fresh croissants, baguettes, and pies by panga in the marina and the lagoon each morning between 8:30 and 9:30. Will accept advance orders either when he delivers, or at his stores in Barra and Melaque.

Pool: Cruisers are reportedly welcome to use the pool at the Hotel Sands if they buy drinks or food.

ATM: There is an ATM behind the concierge desk in the lobby of the Grand Bay Resort, and one on Veracruz in Barra de Navidad.

Internet: In Barra on first floor of large hotel on Vera Cruz up from "the big tree." Wi-Fi purchased from the Grand Bay in the marina also in the lagoon with hi-gain antenna. Free internet at Piper's on the beach.

Hardware stores, bank, and other services: Outboard repair shops and a small ferreteria in Barra. Hardware, welding, electrical repair and a bank are available in Melaque.

Useful Information and Phone Numbers

Medical Assistance: In Tenacatita there is a doctor in residence at the Blue Bay Hotel. In Barra at the Grand Bay Hotel there is an English speaking doctor and a well equipped clinic available 24/7. Dr Linda Rubio on Vera Cruz in Barra. There is a medical laboratory in Cuilacan that can often draw blood and process tests in an hour or two.

Dentist: In Barra Dr. Laura is recommended. 355-6179

Veterinarian: In Melaque "Beto" phone 355-6782 (ofc) 355-6238 (hm)

Cuastacomantes – "The Secret Anchorage"

A small resort town on a bay located between Melaque and Cabeza de Navidad. It has a hotel, a few restaurants and small tiendas and a couple of streets of private residences. Entry to the small bay is mid channel between the headlands. What looks to be a nicely protected corner deep in the southern end of the bay is foul and too shallow for anchorage. Anchor in sand in front of the town beach. The NW swell can work its way in and make the anchorage rolly.

Legacy's approach waypoint 19 13.47 N 104 44.61 W

Electronic Navigation

Nobletec Users: All waypoints, boundaries, and routes listed here and on Kavenga's and Legacy's Barra Lagoon surveys are available as an import file from Legacy or on our website.



Chris and Heather Stockard
s/v Legacy
stockard "at" 123mail.net
www.legacysailing.com
Updated February 22, 2007
Version 3.01

Kavenga's Barra Lagoon Channel and Anchorage Waypoints

These virtual buoys consist of soundings and corresponding GPS positions that were obtained on 12/25/2004 between 1305 and 1415 local time. According to one source, this timeframe corresponded to a tide range of +0.26 feet to -0.30 feet. So, for all practical purposes, it was a zero tide (just dumb luck, not design).

Map Datum – WGS 84

All latitudes are 19 degrees, 11 minutes plus the fractional minute.

All longitudes are 104 degrees, 40 minutes plus the fractional minute.

To save keystrokes, only the fractional portions are given in the positions below.

The waypoint ID numbers are the arbitrary numbers assigned automatically by our GPS and have no inherent meaning, other than it would make correcting and referencing them easier if any users should find significant discrepancies

CHANNEL WAYPOINTS

The following pairs of waypoints mark the approximate opposing edges of the channel leading into the lagoon anchorage. They start at a line drawn from the inner marina jetty to the point directly across from it. All soundings were 10 feet or better. It was noted in our survey that the edges of the channel are fairly steep; i.e. you could "just miss it" or "just hit it" depending on luck. Plot your own waypoints centered between these and you should not have any problems.

Wpt. 90 - .731N, .830W
Wpt. 89 - .748N, .794W

Wpt. 88 - .633N, .743W
Wpt. 87 - .645N, .723W

Wpt. 86 - .557N, .666W
Wpt. 85 - .565N, .640W

APPROACHING THE TURNING POINT

The next two waypoints are for the edges of the channel just before you arrive at the point where you turn left into the anchorage, which is just as you become abreast of the nearest edge of the small island with the sandy beach on the right side of the channel. Another guideline for the channel is to center yourself between the fish pens on either side of the channel or to use the natural range consisting of the left tangent of the small island and the tallest palm tree in the far distance.

Wpt 47 - 8' sounding - .467N, .583W
Wpt 48 12' sounding - .488N, .560W

LAGOON ANCHORAGE BOUNDARY

The rest of the waypoints are all for 7' soundings; i.e. they approximately establish the 7-foot contour around the anchorage. The interior of the anchorage was not systematically sounded, so it is possible there could be a "hump" or two in there somewhere. However, the anchorage was full—nearly 30 boats—when we did this survey and did not hear of any high spots. The anchorage itself has soundings of up to 10 or 11 feet and gets progressively shallower as you approach these boundaries.

Wpt. 50 - .399N, .511W
Wpt. 52 - .301N, .461W
Wpt. 55 - .316N, .401W
Wpt. 57 - .306N, .295W
Wpt. 58 - .342N, .224W
Wpt. 60 - .415N, .223W
Wpt. 63 - .509N, .295W
Wpt. 66 - .558N, .390W
Wpt. 68 - .604N, .450W
Wpt. 69 - .649N, .507W
Wpt. 70 - .647N, .544W
Wpt. 72 - .587N, .519W
Wpt. 73 - .554N, .497W
Wpt. 75 - .529N, .485W
Wpt. 77 - .493N, .482W
Wpt. 78 - .482N, .506W
Wpt. 79 - .479N, .522W

The gaps in waypoint numbers are just soundings that were in a straight line between the soundings given and therefore not necessary to plot the 7-foot contour.

"BACK ALLEY" ANCHORAGE

One of the interesting things discovered in our survey was the existence of an anchorage area behind the fish pen on your left as you enter. To the best of our knowledge no one was using this area, probably because it was assumed that any area behind the fish pens was probably shoal. The "Back Alley" as we call it, is delimited by virtual buoys 68 through 73.

In order to get there you first need to come all the way into the anchorage area, turn left, go past a line through the fish pen and parallel to the channel. You can then turn left again into this area. You can continue back towards town until you reach a line drawn from the fish pen shack to the point opposite it (to the ENE). The alley appears to be about 300 feet wide and possibly 1000 to 1200 feet long. So if a few boats anchored single file down the centerline of the alley, there should be plenty of swinging room since not much scope is needed (100') in the shallow water. More soundings would be helpful, but it looks usable if the rest of the anchorage is already crowded.

CON CUIDADO (CAUTION!)

All the usual disclaimers apply. Use these virtual buoys with caution, along with other sources; i.e. your depthsounder, your eyes, local assistance, etc. If you have the means and opportunity, please take your own soundings and let me know how they compare. We

found other "deep holes" near the anchorage but didn't take enough soundings to know if there is a deep path to them. Hopefully, these waypoints, or "virtual buoys" will take some of the guesswork out of the equation.

Fair seas,
Steve & Kay Van Slyke
kavenga at-sign att dot net (to foil worms searching for names to add to their spam lists)

ADDENDUM – BARRA LAGOON ISLAND

Legacy charted the following waypoints that outline the island in the Barra Lagoon. Plotted together with the anchorage limits they provide a useful reference:

IS01 - .402N, .528W IS08 - .271N, .596W
IS02 - .364N, .500W IS09 - .301N, .591W
IS03 - .344N, .491W IS10 - .331N, .580W
IS04 - .315N, .500W IS11 - .363N, .555W
IS05 - .280N, .537W IS12 - .387N, .556W
IS06 - .264N, .570W IS13 - .402N, .544W
IS07 - .265N, .590W

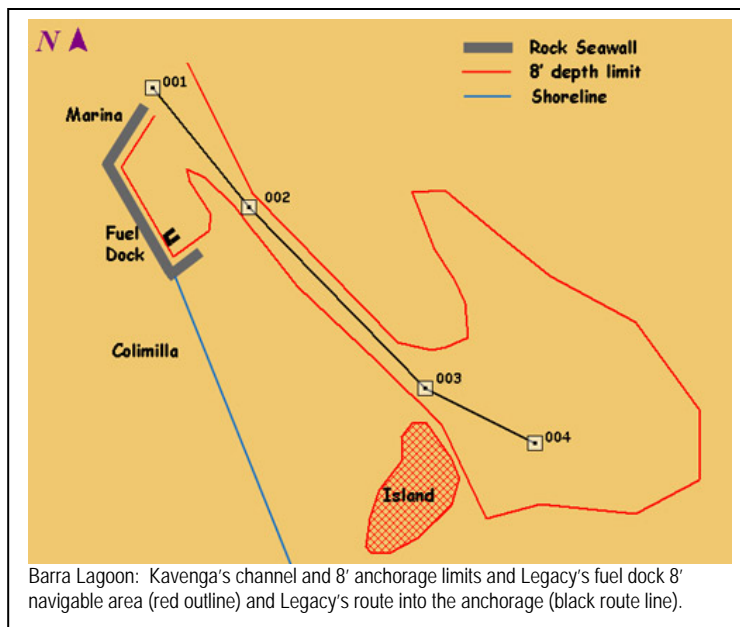
ADDENDUM – BARRA FUEL DOCK

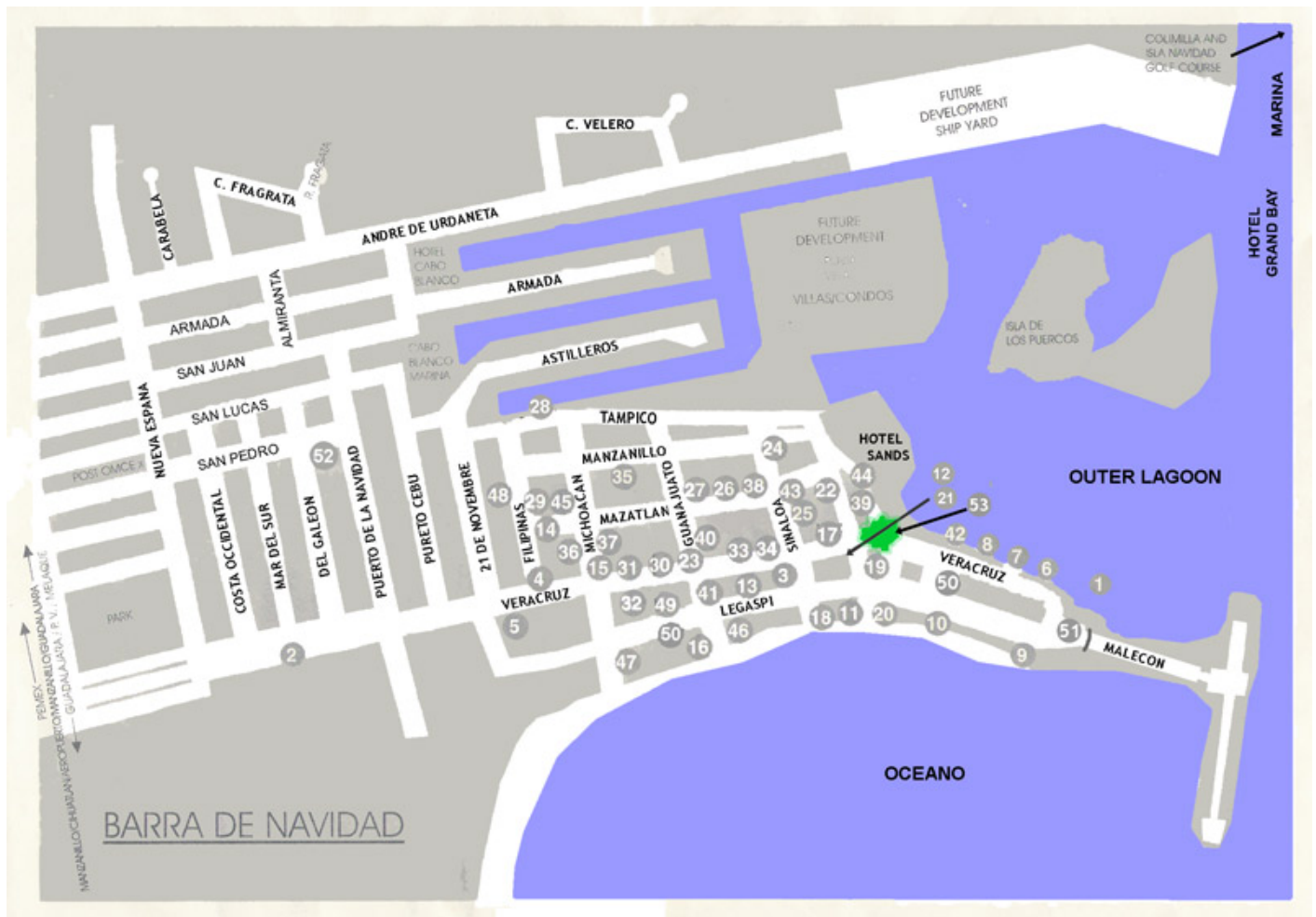
Legacy charted the approach to the fuel dock as many folks run onto the shoal between the channel and the fuel dock. These waypoints can be inserted between Kavenga's Wpt 90 and Wpt 88 to show the navigable areas.

FD1 - .673N, .869W
FD2 - .579N, .811W
FD3 - .606N, .771W
FD4 - .623N, .769W
FD5 - .658N, .792W
FD6 - .671N, .795W
FD7 - .663N, .775W

Legacy's Route into the Barra Lagoon Anchorage

'001'	19 11.757 N	104 40.833 W
'002'	19 11.630 N	104 40.725 W
'003'	19 11.439 N	104 40.529 W
'004'	19 11.380 N	104 40.406 W





Barra de Navidad Street Map Key

TRANSPORTATION

- 1 Water Taxi
- 2 Bus Route (Cihuatlan and Melaque)
- 3 Travel Agency
- 4 Bus Station
- 5 Bus Station
- 12 Dinghy Landing, Sands Hotel

RESTAURANTS

- 6 El Manglito
- 6 Alcatraz ☼
- 7 Jalapeños
- 8 Valeros ☼
- 8 Isadoras ☼
- 8 Valeros
- 9 Popeyes ☼
- 10 Seamaster ☼
- 10 Pipers ☼
- 11 Sunset Bar (sports TV) ☼
- 11 Benedetis Pizza ☼
- 13 Ramon's (sports TV)
- 14 Los Arcos
- 15 Carmen's Tortas
- 16 Mar y Tierra
- 17 Paty's (chicken)
- 18 Chips (down alley) ☼
- 18 Bananas (closed 12-6) ☼
- 18 Ambar (beach deck) ☼

- 21 Hotel La Alondra (roof) ☼
- 50 Lucy's ☼
- 50 Casa Sol Music (side street)
- 51 Cake Lady ☼
- Maya – Melaque ☼
- Restaurant Ava – Melaque ☼
- Fortino's – in Colimilla ☼
- Figueroa – in Colimilla
- Lidia – in Colimilla
- Susana – in Colimilla
- Mary – in Colimilla ☼

SERVICES

- 4 Dr Linda Rubio
- 4 Pharmacia
- 18 French Baker ☼
- 19 Fax services*
- 20 Fishing tackle and lures
- 21 Internet
- 22 Laundry*
- 23 Block Ice
- 24 TV / electronics repair*
- 25 Shoe repair*
- 26 Video rental
- 27 Hardware*
- 28 Beer Bob's Book Exchange (12-3)
- 29 Copies*
- 30 Paint store

- 31 ATM
- 32 Celia's hair and nail salon
- 33 Dentist*
- 34 Pharmacy (many others, too)*
- 35 Hardware*
- 52 Port Captain
- ATM – behind concierge at Grand Bay Hotel

GROCERIES

- Maria's Tienda – Colimilla ☼
- 36 Ixtapa market
- 37 Liquor store
- 38 Carniceria (beef/pork)
- 39 Carniceria (beef/pork)
- 40 Carniceria (beef/pork)
- 41 Liquor and cigars
- 42 Fresh fish
- Super Hawaii – Melaque
- Laughing Cow (Sonora beef) - Melaque
- Comercial Mexicana – Manzanillo
- Veggie Truck – on Vera Cruz

MISCELLANEOUS

- 43 San Lorenzo Hotel
- 44 Hotel Delfin
- 45 Posada Pacifico

- 46 Hotel Barra de Navidad
- 47 Hotel Bogavante
- 48 Hotel El Marquez
- 49 Catholic Church
- 53 "The Big Tree"

- Auto parts in Melaque and Cihuatlan
- Pet stores in Cihuatlan
- Medical laboratory in Cihuatlan

* Businesses closed 2-4pm

☼ m/v Too Goode approved